

# An Introduction to the Administration for Community Living

Amanda Cash, DrPH, MPH

Director, Office of Performance & Evaluation

Administration for Community Living

December 9, 2022

# Introduction & Background

- Education
  - Undergraduate in Political Science
  - Masters in Public Health, Health Policy
  - Doctorate in Epidemiology
  - Dissertation on randomized school-based intervention to prevent and attenuate childhood obesity
- Federal career has involved several locations:
  - Health Resources and Services Administration (HRSA) - Analyst
  - Assistant Secretary for Planning and Evaluation (ASPE) – Senior Analyst, Senior Advisor, Division Director
  - Detailed to White House Office of Management and Budget – Senior Analyst
  - Centers for Medicare and Medicaid Services (CMS) – Division Director
  - Administration for Community Living (ACL) – Office Director

# ACL's Mission and Vision

## Mission

Maximize the independence, well-being, and health of older adults, people with disabilities, and their families and caregivers.

## Vision

All people, regardless of age and disability, live with dignity, make their own choices, and participate fully in society.

# ACL's Primary Roles

- Implement critical disability and aging programs
- Serve as the advisor to the HHS Secretary on disability and aging policy
- Work with other HHS agencies, Departments and the White House on disability and aging policies, including:
  - HHS Office for Civil Rights, Centers for Medicare & Medicaid Services, Substance Abuse and Mental Health Services Administration, and the Centers for Disease Control & Prevention
  - Departments of Housing and Urban Development, Education, Labor, Justice, Veterans Affairs and Transportation
- Engage a range of disability and aging stakeholders to inform policy development and implementation

# ACL and our Networks: What we Offer

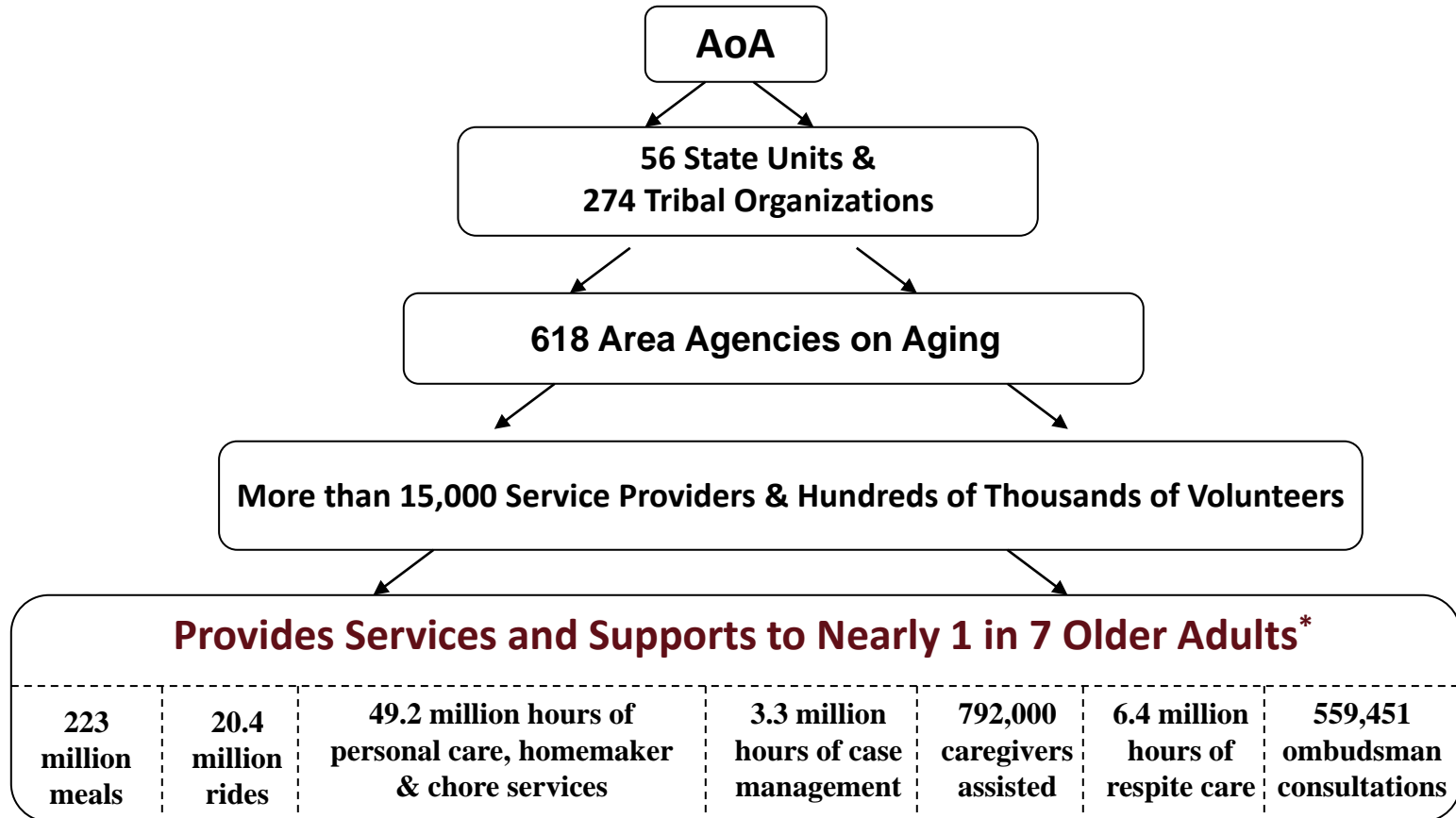
- Direct services
  - Includes nutrition, community services, and caregiver supports
- Legal advocacy and rights protections
- Individual and systems/state level advocacy
- Research
- Information and referral & streamlining access
- Capacity building

# ACL's Disability & Aging Networks

ACL funds over 20,000 community-based organizations in every state and in communities across the country

- **Aging Networks**
  - State Units on Aging
  - Area Agencies on Aging
- **Developmental Disability Networks**
  - Protection & Advocacy Systems
  - State DD Councils
  - University Centers for Excellence in Developmental Disabilities
- **Independent Living Networks**
  - Centers for Independent Living
  - Statewide Independent Living Councils
- **Other Networks**
  - State Assistive Technology Programs
  - State No Wrong Door Systems/Aging and Disability Resource Centers
  - Traumatic Injury Programs
  - Limb Loss and Paralysis Resource Centers

**The Older Americans Act, Administered by the Administration on Aging (AoA),  
Helps Over 10 Million Older Adults (1 in 7)  
Remain at Home through Low-Cost, Community-Based Services  
(*\$3 to \$1 Return on Federal Investment*)**



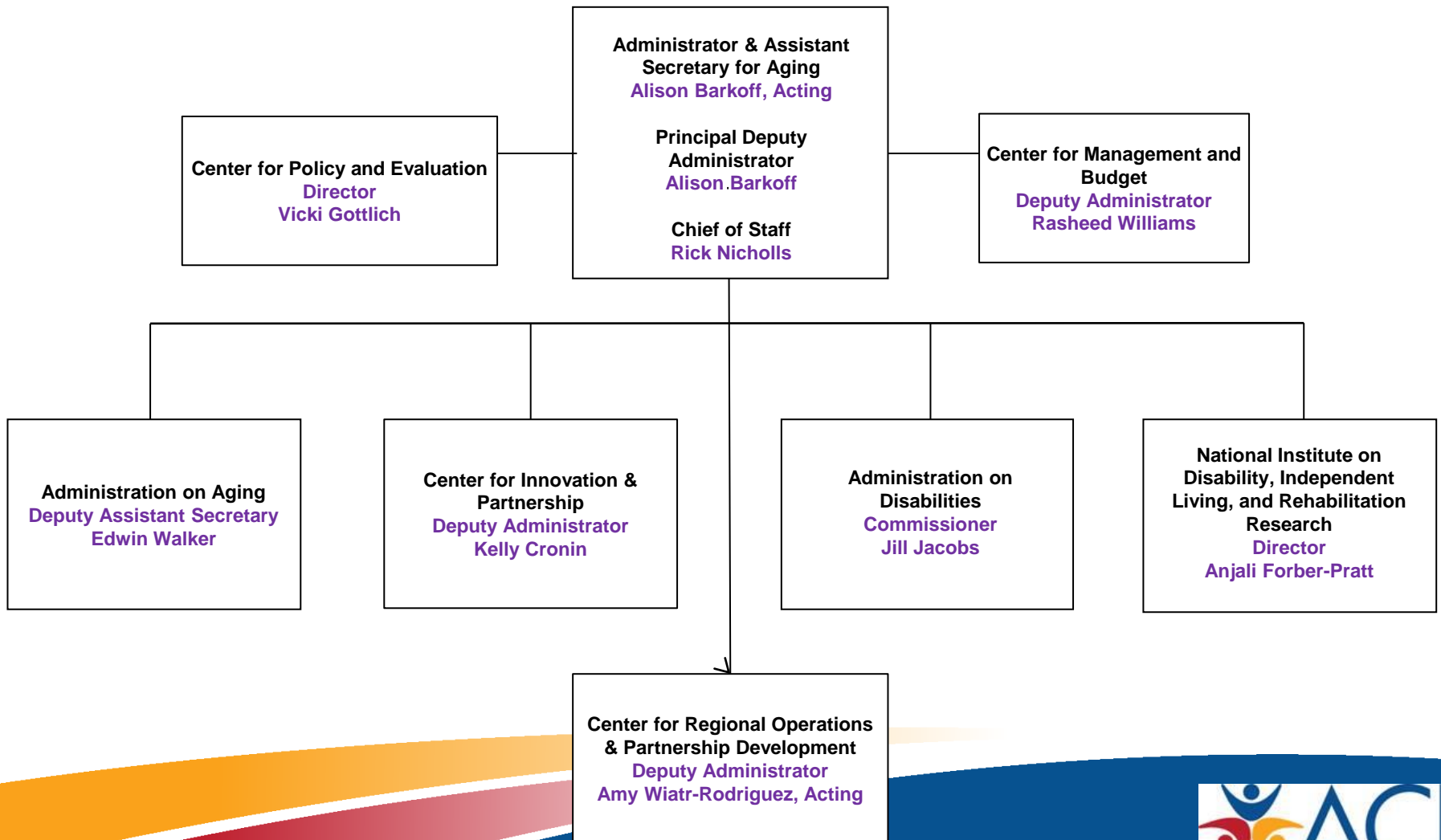
\*Data Source: FY 2019 SPR and Title VI PPR

# ACL's Budget

- FY 2021 total budget of **\$2.26B**
- **\$3.2B** in COVID-19 Supplemental Funding
- FY 2022 budget **\$2.46B**



# Organization



# Office of Performance & Evaluation

- Conduct program evaluations
- Manage performance data collection and management
- Conduct policy analysis and intramural research
- Develop evidence for program improvement and policy development

# Typical Day in ACL

- Review deliverables from a contracted research or evaluation study
- Meet with ACL partners on a cross-cutting initiative
- Review grantee performance data and meet with ACL partners to determine if we need to work with the grantee to deal with errors or gaps in data
- Respond to leadership requests
- Examine privacy concerns related to survey or performance data to ensure confidentiality of data before we post it or link it to other sources for analysis
- Present to ACL programs or leadership on results of a study or analysis

# Examples of ACL/OPE's Work

- Evaluation of National Paralysis Resource Center
- National Survey of Older Americans Act Participants
- Examining how we can look longitudinally over the 20+ years of NSOAAP data to see trends
- Study of fidelity to chronic disease management programs for older adults
- Evaluation of the Long-term Care Ombudsman Program
- Evaluation of the Aging and Disability Resource Centers



The screenshot displays the ACL website's navigation and content. At the top, the ACL logo (Administration for Community Living) is on the left, and navigation links for "Program and Policy Areas", "Grants", "Data, Research & Issues", and "News" are on the right. Below the logo, a breadcrumb trail reads "Home / Program and Policy Areas / Program Evaluations and Reports". The main heading is "Program Evaluations and Reports". On the left, a sidebar titled "PROGRAM AND POLICY AREAS" lists various categories: "\*\*\* COVID-19 \*\*\*", "ACL A to Z: Programs, Networks, & Focus Areas", "Overview", "Aging and Disability Networks", "Alzheimer's Disease and Dementia", "Connecting People to Services", "Consumer Choice and Control", "Data Projects", "Empowering Advocacy", and "Employment". The main content area features a paragraph about ACL's evaluation process, mentioning a "learning agenda approach" and an "interim learning agenda". Below this, a section titled "ACL Guidance and Toolkits" lists several items: "ACL Performance Strategy", "ACL Performance Measure Guidance", "ACL Data Quality Guidance", "ACL Logic Model Guidance", "ACL Strategic Planning Guidance", and "ACL Systems Change Measurement Guidance".

# Interagency and ACL Initiatives

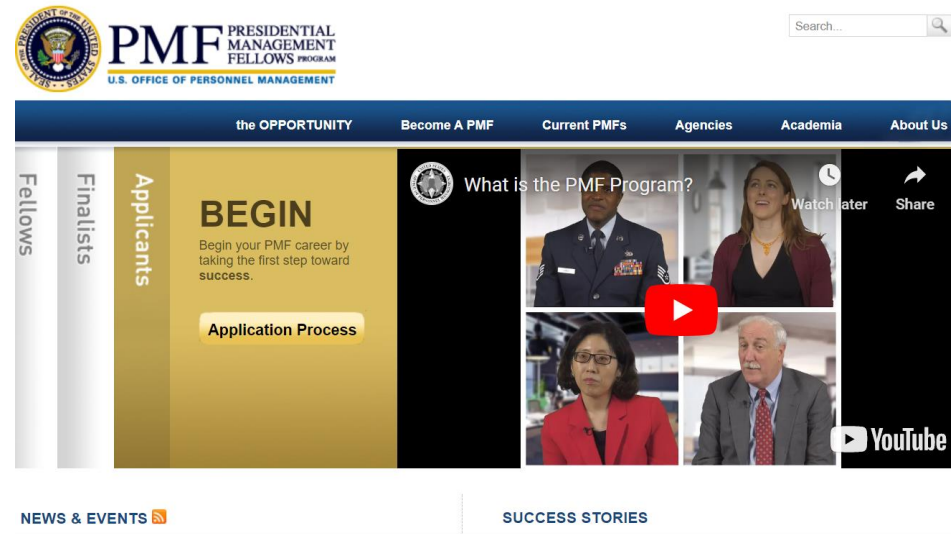
- Elder Justice Working Group
- Behavioral Health Coordinating Committee
- Social Determinants of Health Work Group
- HHS Data Council and Data Governance Board
- ACL Health Equity Work Group
- ACL Data Council

# Who we are looking for

- People with expertise in aging, disability, long-term care policy
- Build our intramural research capacity; expertise in survey and administrative data sources, experience with analyzing large data sets, linking data, or using Census data
- People who are succeed at ACL are:
  - Intellectually curious
  - Analytical
  - Dedicated to public service
  - Independently motivated
  - Comfortable making connections
  - Work well in a fast-paced, mission-driven environment
  - People with lived experience – those who have disabilities, from tribal communities, are themselves aging, etc.

# Presidential Management Fellows

- Bearing the Presidential moniker, the PMF Program is the Federal Government's flagship leadership development program for advanced degree holders across all academic disciplines. It was established 45 years ago by Executive Order and has gone through changes over the years, but the essential mission remains the same: **to recruit and develop a cadre of future government leaders from all segments of society.**
- [https://www.youtube.com/watch?v=cd\\_J3TGOSi8](https://www.youtube.com/watch?v=cd_J3TGOSi8)



# Getting in Touch

- Email any time
  - [amanda.cash@acl.hhs.gov](mailto:amanda.cash@acl.hhs.gov)
  - [evaluation@acl.hhs.gov](mailto:evaluation@acl.hhs.gov)
- Sign up for the ACL newsletters:
  - <https://acl.gov/news>
  - <https://cloud.connect.hhs.gov/acl-subscriptions>