

Aging Policy Research at the Office of the Assistant Secretary Planning & Evaluation

Helen Lamont, Ph.D.

Director, Division of Disability & Aging Policy
Office of the Assistant Secretary for Planning & Evaluation

December 9, 2022

U.S. Department of Health and Human Services



Introduction

- Undergraduate at Duke, worked in Center on Aging
- Ph.D. in Aging Studies from USF
- Dissertation focused on influence of community context on racial/ethnic physical and mental health disparities in Florida (now known as SDOH)
- Summer internship at the EPA Aging Initiative
- ASPE analyst
- Director, Division of Disability & Aging Policy



Mission

The Assistant Secretary for Planning and Evaluation (ASPE) advises the Secretary of the Department of Health and Human Services on policy development in health, disability, human services, data, and science; and provides advice and analysis on economic policy. The ASPE leads special initiatives; coordinates the Department's evaluation, research, and demonstration activities; and manages cross-Department planning activities such as strategic planning, legislative planning, and review of regulations. Integral to this role, The ASPE conducts research and evaluation studies; develops policy analyses; and estimates the cost and benefits of policy alternatives under consideration by the Department or Congress.



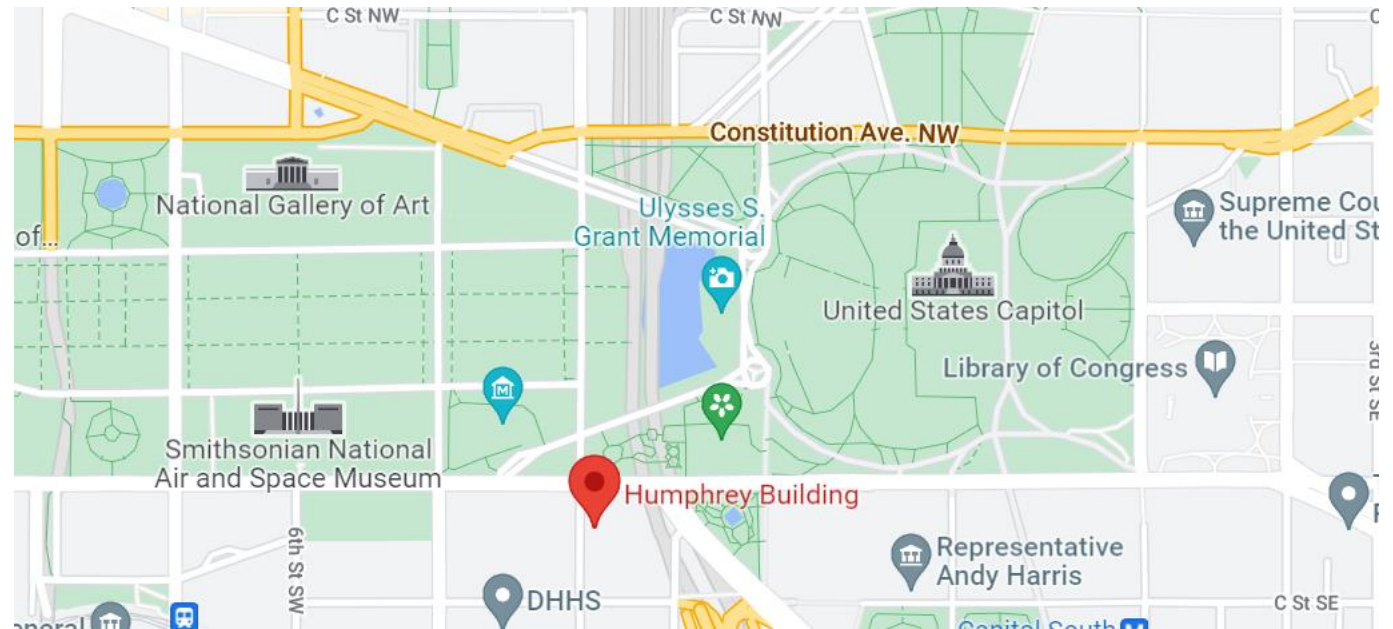
What is ASPE? What are ASPE's Roles?

- Policy analysis that is cross-cutting, integrated across HHS agencies
- Targeted policy research
- Respond quickly to emerging policy issues
- Convene and contribute to cross-cutting (or one dimensional) initiatives
- Strategic planning
- Coordinate on legislative policy proposals
- Home of the Secretary's Chief Economist

- ASPE is not the only group that does policy analysis in HHS, not a major funder of research, and not an advocacy organization



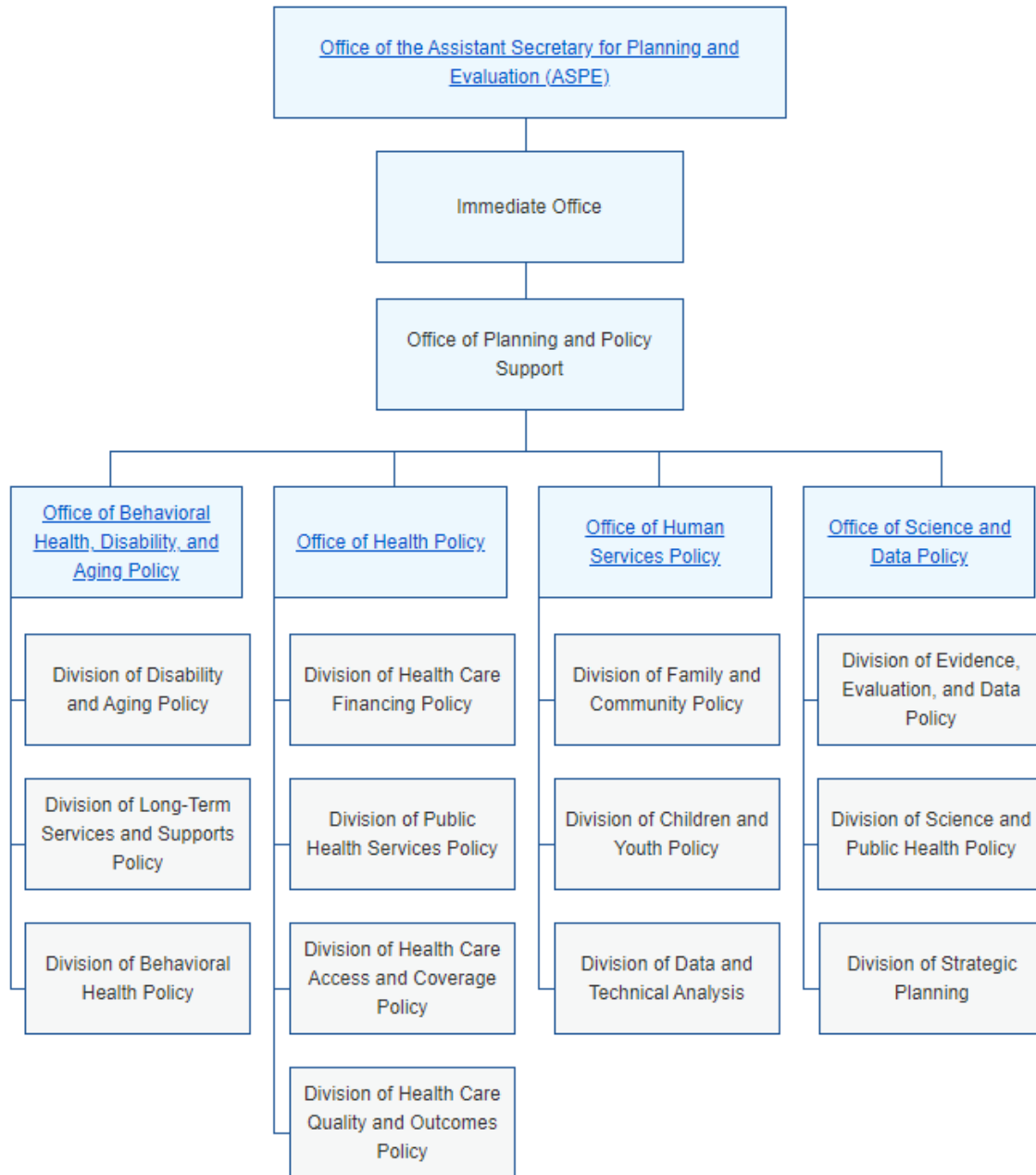
Where is ASPE located?



Who Works in ASPE?

- Public health experts
- Economists
- Public administration experts
- Sociologists
- Statisticians
- Gerontologists
- Psychologists
- Demographers
- Social workers
- Urban planners
- Doctors and nurses





Offices in ASPE

- Office of Behavioral Health, Disability, and Aging Policy (BHDAP)
- Office of Health Policy (HP)
- Office of Human Services Policy (HSP)
- Office of Science and Data Policy (SDP)
- Office of Planning and Policy Support (OPPS)

What is Policy Research?

- Goal: Understand how policies, regulations, and practices may influence health and well-being of our target populations.
- Requires different types of research questions and a variety of methodologies
 - Quantitative, qualitative, mixed methods
 - Examples: environmental scan/literature reviews, focus groups, key informant interviews, study design, program evaluation, administrative data analyses, linking and analyzing linked datasets
- Conducted at a variety of points in the policy process



How do we conduct Policy Research?

- Intramural research
 - Access to variety of data resources
- Contracted research:
 - ASPE analysts identify research questions, data sources, and analyses
 - Contractor does the work, with input from ASPE
 - Presentations, final reports, publications are authored by contractor and/or ASPE staff
 - ASPE commonly contracts with RAND, NORC, RTI, Mathematica, Urban Institute, AIR, Abt Associates, other
 - Contractors need staff with expertise in aging and disability, behavioral health, long-term services and supports as well as with strong methodological backgrounds



Typical Day at ASPE

- Review deliverables from a contracted research project
- Meet with agency partners on a cross-cutting initiative
- Review Report to Congress from an agency relevant to your topic area
- Respond to leadership requests
- Meet with ASPE colleagues about a cross-cutting topic
- Conduct background research on a project idea



Office of Behavioral Health, Disability, & Aging Policy

- Focus on policies and programs that support the independence, productivity, health, well-being, and long-term care needs of people with disabilities, older adults, and people with behavioral health needs.
- Key partners
 - Administration for Community Living
 - Substance Abuse and Mental Health Services Administration
 - Centers for Medicare & Medicaid Services
 - National Institutes of Health (especially NIA, NINDS, NIMH, NIAAA, NIDA)
 - Health Resources and Services Administration

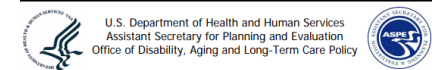
BHDAP Topics

- Disability measurement
- HCBS; Consumer direction
- Nursing home and post-acute care
- LTC and BH workforces
- Demography of aging and LTC modeling
- Alzheimer's disease and related dementias
- Mental health, substance use disorders and aging; suicide
- LTC and BH care quality
- Family caregiving
- Housing with services/residential care
- Health IT in LTC
- Hospice and end-of-life care



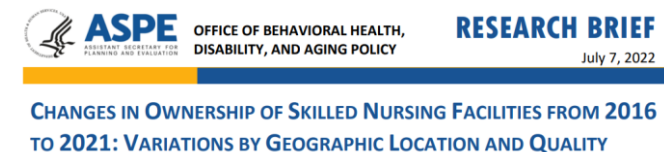
Examples of BHDAP research

- Cash and Counseling Demonstration
- National Survey of Residential Care Facilities
- National Nursing Assistant/Home Health Aide Surveys
- Falls Prevention Demonstration Project
- Evaluation of SASH
- Impact of COVID on Medicare Beneficiaries with Dementia, Nursing Home Staffing, Home Health Care Agencies
- Risks and Costs of Long-Term Care



CHANGING TO CONSUMER-DIRECTED CARE:

THE IMPLEMENTATION OF THE CASH AND COUNSELING DEMONSTRATION IN FLORIDA



Interagency Initiatives Supported by BHDAP

- National Alzheimer's Project Act (NAPA)
- Interagency Forum on Aging-Related Statistics
- Elder Justice Working Group
- US Interagency Council on Homelessness
- HUD-HHS Working Group
- Behavioral Health Coordinating Committee
- Overdose Prevention Strategy



Who we are looking for

- People with expertise in aging, disability, long-term care policy
- Build our intramural research capacity; expertise in survey and administrative data sources
- People who are succeed at ASPE are:
 - Curious
 - Analytical
 - Dedicated to public service
 - Independently motivated
 - Interested in making connections
 - Comfortable with collaboration



Other Opportunities for Aging Research/Policy

- Health and Aging Policy Fellowship
 - [Call for applications for 2023-2024 program now open](#)
- American Association for the Advancement of Science (AAAS) Science & Technology Policy Fellowships
- ORISE Fellowships



Getting in touch

- Email any time
 - Helen.Lamont@hhs.gov
 - Emily.Rosenoff@hhs.gov
- Sign up for the ASPE and BHDAP newsletters on our website
- <http://aspe.hhs.gov>



Questions or comments?

